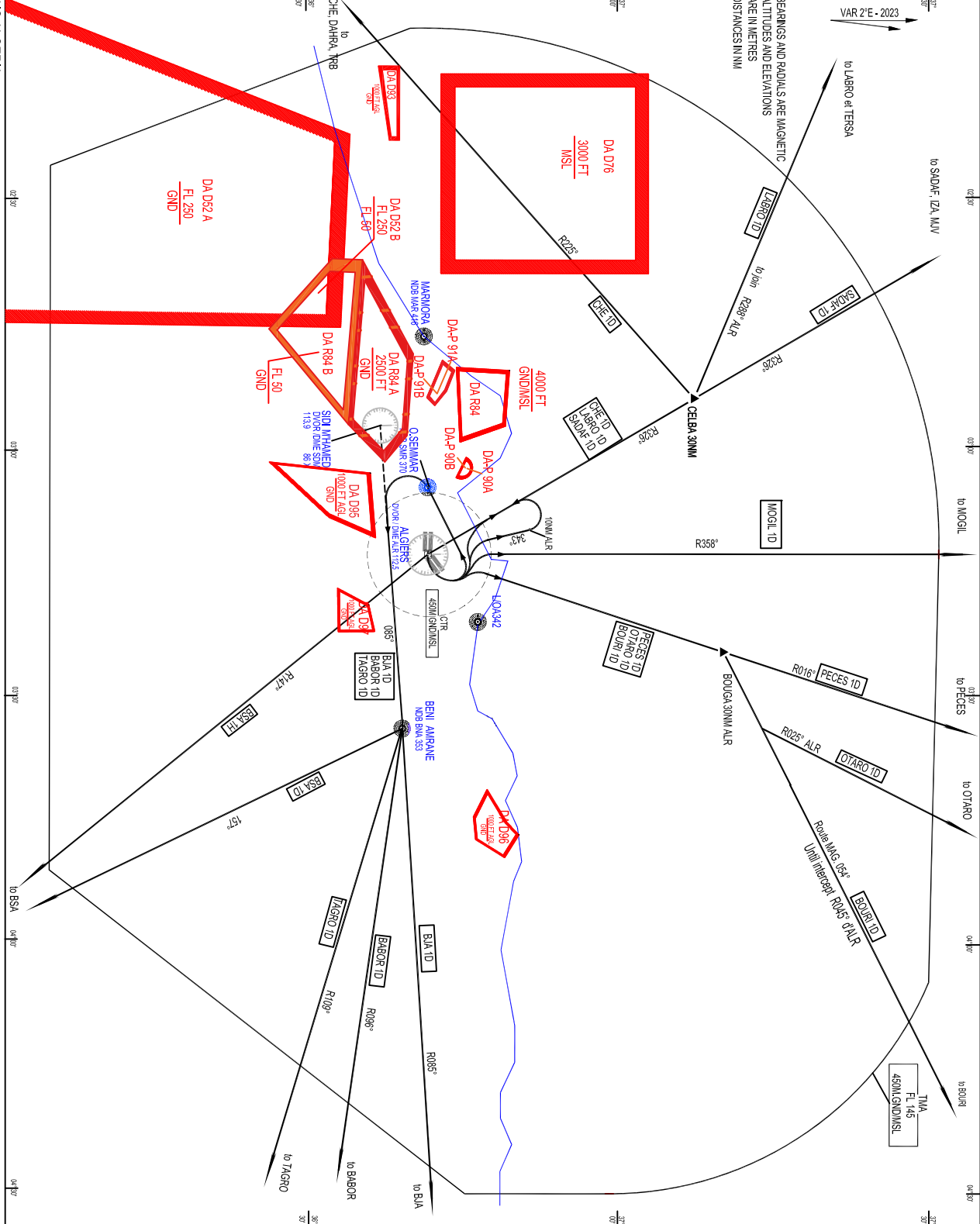


STANDARD DEPARTURE CHART
INSTRUMENT (SID) - ICAO

TRANSITIONAL ALTITUDE
1200m

TWR: 116.7 - 119.7 (a)
APP: 121.4

RMW 09



ALGERS TMA		
DEPARTURES PROCEDURES - ALGERS HOuari BOUMEDIENE		
RMW 09		
CODE	EXIT POINT	PATHS
MOD ID		After Take-off turn left, intercept and follow R358° ALR to MOGIL, then M/V.
PECES ID		After Take-off turn left, intercept and follow R016° ALR to PECES then M/V.
OTARO ID		After Take-off turn left, intercept and follow R016° ALR, at BOUGA (30NM ALR). Turn right to join R 025° ALR to OTARO.
BOUR ID		After Take-off turn left, intercept and follow R016° ALR, at BOUGA (30NM ALR). Turn right to join R045° ALR to BOUR.
BJA ID		After Take-off turn left, intercept and follow R065° SDM to BNA, pass BNA FL 70 minimum, then turn left to intercept and follow R065° SDM to BNA, pass BNA FL 70 minimum, then route to BJA.
BAJOR ID		After Take-off reach 1500ft then turn left and proceed to SMR, pass on SMR FL 40 minimum, then turn left to intercept and follow R065° SDM to BNA, pass BNA FL 70 minimum, then route to BAJOR.
TAGRO ID		After Take-off reach 1500ft then turn left and proceed to SMR, pass on SMR FL 40 minimum then turn left to intercept and follow R065° SDM to BNA, pass BNA FL 70 minimum, then route to TAGRO.
BSA ID		After Take-off reach 1500ft then turn left and proceed to SMR, pass on SMR FL 40 minimum, then turn left to intercept and follow R065° SDM to BNA, pass BNA FL 70 minimum, then route to BSA.
BSA IH		After Take-off reach 1500ft then turn left, intercept and follow R345° ALR, at 10NM turn left to return to R326° to ALR, pass ALR FL 70 minimum then join R147° ALR to BSA.
CHE ID		After Take-off reach 1500ft then turn left, intercept and follow R326° at CEIBA (30NM ALR) turn left on CHE to DAHRA or TRB.
LABRO ID		After Take-off reach 1500ft then turn left, intercept and follow R326° at CEIBA (30NM ALR) turn left to join R238° ALR to TERSA then LABRO.
SAOUF ID		After Take-off reach 1500ft then turn left, intercept and follow R326° ALR then route to SAOUF then ZA or M/V.

AIS ALGERIA

CHG :UPPER LIMIT DA R84

AIRAC AMDT 09/25